



Fe²⁶ STEEL RAILING

RETHINK THE RAIL.



JOIN THE REVOLUTION.
FortressBP.com | 866.323.4766



THE ORDINARY



THE STRENGTH OF STEEL. THE POWER OF FORTRESS

Fortress® Fe²⁶ steel railing is a pre-welded, easily customized and enhanced version of traditional wrought iron railing. It brings unparalleled quality to any patio, deck or balcony. The railing provides a clean, classic appearance that is versatile for a variety of applications and surfaces. Pre-galvanized steel, zinc phosphate, e-coat and premium powder coating make it the most elegant and durable steel railing system on the market.

**RESISTS RUST
& CORROSION**

**PRE-
GALVANIZED**

**PRE-WELDED
PANELS**



KEY FEATURES

- Pre-welded panels
- Posts offer option for pre-attached patented brackets
- FortressShield - coated utilizing advanced automotive coating process to resist rust and corrosion
- Customization available
- Use with wood, composite, vinyl or Fortress steel posts
- Quick and easy installation
- Fortress Fe²⁶ steel railing panels are tested in accordance with ICC-ESTM AC273 & OBC/NBCC

FortressShield TECHNOLOGY

15-Year Limited Warranty

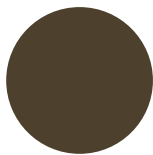
Fe²⁶ is backed by a 15-year warranty and a hassle-free claims process. Visit FortressBP.com for complete warranty details and exclusions.



PREMIUM FINISH



Gloss Black



Antique Bronze



Black Sand

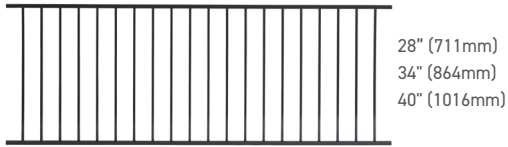
— Simple Assembly —

EASY AS 1, 2, 3, FORTRESS



1 PANELS

Panels can be used with several types of posts such as steel, wood, vinyl or composite

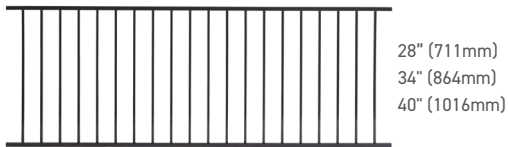


6'
Actual 69.5"
(1765mm)

1" (25mm) wide 16 GA top & bottom rail
5/8" (16mm) wide 16 GA baluster
3-7/8" (98mm) between balusters

TRADITIONAL STEEL RAILING PANELS 6'

ITEM#	DESCRIPTION	UPC #
640014	FE26-TRADITIONAL 28"X6' GBLK	844530009351
53128706	FE26-TRADITIONAL 28"X6' ABZ	844530009368
53128708	FE26-TRADITIONAL 28"X6' BKSND	844530013792
640018	FE26-TRADITIONAL 34"X6' GBLK	844530004349
53134706	FE26-TRADITIONAL 34"X6' ABZ	844530005506
53134708	FE26-TRADITIONAL 34"X6' BKSND	844530012276
640008	FE26-TRADITIONAL 40"X6' GBLK	844530000907
53140706	FE26-TRADITIONAL 40"X6' ABZ	844530007487
53140708	FE26-TRADITIONAL 40"X6' BKSND	844530012290

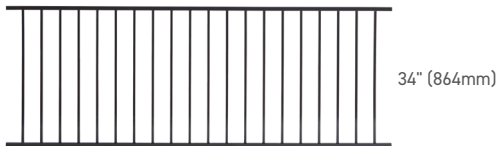


8'
Actual 93.5"
(2375mm)

1" (25mm) wide 16 GA top & bottom rail
5/8" (16mm) wide 16 GA baluster
3-7/8" (98mm) between balusters

TRADITIONAL STEEL RAILING PANELS 8'

ITEM#	DESCRIPTION	UPC #
640004	FE26-TRADITIONAL 28"X8' GBLK	844530009337
53128946	FE26-TRADITIONAL 28"X8' ABZ	844530003991
53128948	FE26-TRADITIONAL 28"X8' BKSND	844530013808
640016	FE26-TRADITIONAL 34"X8' GBLK	844530002611
53134946	FE26-TRADITIONAL 34"X8' ABZ	844530004677
53134948	FE26-TRADITIONAL 34"X8' BKSND	844530018155
640007	FE26-TRADITIONAL 40"X8' GBLK	844530000204
53140946	FE26-TRADITIONAL 40"X8' ABZ	844530005599
53140948	FE26-TRADITIONAL 40"X8' BKSND	844530012306



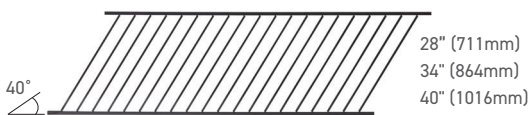
10'
Actual 117.5"
(2985mm)

1" (25mm) wide 16 GA top & bottom rail
5/8" (16mm) wide 16 GA baluster
3-7/8" (98mm) between balusters

TRADITIONAL STEEL RAILING PANELS 10'

ITEM#	DESCRIPTION	UPC #
531341200	FE26-TRADITIONAL 34"X10' GBLK (16GA)	844530015239
531341206	FE26-TRADITIONAL 34"X10' ABZ (16GA)	844530015246
531341208	FE26-TRADITIONAL 34"X10' BKSND (16GA)	844530015253

**Fe²⁶ 10' panels must be installed with Fortress Universal Brackets (UB-04) and either: Fe²⁶ cap rail clips (5 minimum) and a deck board/drink rail; minimum 0.75" thickness of board; maximum board width of 5.5". OR Fortress 10' Colonial Round Accent Top Rail*



6'
Actual 72"
(1829mm)

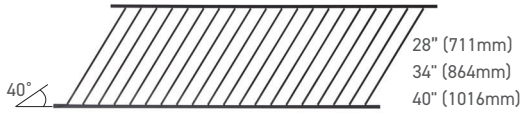
1" (25mm) wide 16 GA top & bottom rail
5/8" (16mm) wide 16 GA baluster
3 7/8" (98mm) between balusters

ADJUSTABLE STAIR STEEL RAILING PANELS 6'

ITEM#	DESCRIPTION	UPC #
53228690	FE26-TRADITIONAL (ADJ) 28"X6' GBLK	844530014720
53228696	FE26-TRADITIONAL (ADJ) 28"X6' ABZ	844530014737
53228698	FE26-TRADITIONAL (ADJ) 28"X6' BKSND	844530014744
650402	FE26-TRADITIONAL (ADJ) 34"X6' GBLK	844530005568
53234696	FE26-TRADITIONAL (ADJ) 34"X6' ABZ	844530005575
53234698	FE26-TRADITIONAL (ADJ) 34"X6' BKSND	844530018162
650407	FE26-TRADITIONAL (ADJ) 40"X6' GBLK	844530002024
53240696	FE26-TRADITIONAL (ADJ) 40"X6' ABZ	844530005766
53240698	FE26-TRADITIONAL (ADJ) 40"X6' BKSND	844530014768



1 PANELS

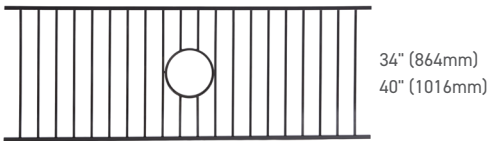


8'
Actual 93.5"
(2375mm)

1" (25mm) wide 16 GA top & bottom rail
5/8" (16mm) wide 16 GA baluster
3 7/8" (98mm) between balusters

ADJUSTABLE STAIR STEEL RAILING PANELS 8'

ITEM#	DESCRIPTION	UPC #
650404	FE26-TRADITIONAL (ADJ) 28"X8' GBLK	844530009382
53228946	FE26-TRADITIONAL (ADJ) 28"X8' ABZ	844530009399
53228948	FE26-TRADITIONAL (ADJ) 28"X8' BKSND	844530013815
650403	FE26-TRADITIONAL (ADJ) 34"X8' GBLK	844530007432
53234946	FE26-TRADITIONAL (ADJ) 34"X8' ABZ	844530007449
53234948	FE26-TRADITIONAL (ADJ) 34" X8' BKSND	844530012313
650408	FE26-TRADITIONAL (ADJ) 40"X8' GBLK	844530007463
53240086	FE26-TRADITIONAL (ADJ) 40"X8' ABZ	844530007470
53240948	FE26-TRADITIONAL (ADJ) 40"X8' BKSND	844530012320



8'
Actual 93.5"
(2375mm)

ORNAMENTAL STEEL RAILING PANELS 8'

ITEM#	DESCRIPTION	UPC #
640102	FE26-ORNAMENT PANEL 34"X8' GBLK	844530007531
640107	FE26-ORNAMENT PANEL 40"X8' GBLK	844530000297



11.43" (290mm) diameter

ORNAMENTAL STEEL RAILING INSERT - 2D STAR

ITEM#	DESCRIPTION	UPC #
53012100	FE26-2D STAR GBLK	844530002741



11.43" (290mm) diameter

ORNAMENTAL STEEL RAILING INSERT - 3D STAR

ITEM#	DESCRIPTION	UPC #
53012110	FE26-3D STAR GBLK	844530001799



11.43" (290mm) diameter

ORNAMENTAL STEEL RAILING INSERT - ELK

ITEM#	DESCRIPTION	UPC #
53012160	FE26-ELK GBLK	844530002802



11.43" (290mm) diameter

ORNAMENTAL STEEL RAILING INSERT - 4CS

ITEM#	DESCRIPTION	UPC #
53012120	FE26-4CS GBLK	844530001805



11.43" (290mm) diameter

ORNAMENTAL STEEL RAILING INSERT - MOUNTAINS

ITEM#	DESCRIPTION	UPC #
53012150	FE26-MOUNTAINS GBLK	844530002796



3.5" I-SUPPORT (89MM)

ITEM#	DESCRIPTION	UPC #
55535000	3.5" I-SUPPORT GBLK	844530016885
55535008	3.5" I-SUPPORT BKSND	844530016908

I-SUPPORT ATTACHMENT FOR FASCIA MOUNT

ITEM#	DESCRIPTION	UPC #
53503030	I-SUPPORT ATTACHMENT FOR FASCIA MOUNT GBLK	844530000075
53503038	I-SUPPORT ATTACHMENT FOR FASCIA MOUNT BKSND	844530000167

2 POSTS AND BRACKETS



STEEL POST WITH BASE & BASE COVER 2" x 39.5"

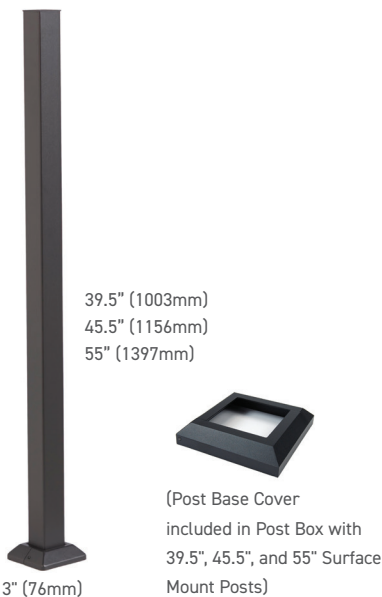
ITEM#	DESCRIPTION	UPC #
53302410	FE26-POST 2"X39.5" W/4" BASE/COVER GBLK	844530015260
53302416	FE26-POST 2"X39.5" W/4" BASE/COVER ABZ	844530015277
53302418	FE26-POST 2"X39.5" W/4" BASE/COVER BKSND	844530018179

STEEL POST WITH BASE & BASE COVER 2" x 45.5"

ITEM#	DESCRIPTION	UPC #
53302470	FE26-POST 2"X45.5" W/4" BASE/COVER GBLK	844530015291
53302476	FE26-POST 2"X45.5" W/4" BASE/COVER ABZ	844530015307
53302478	FE26-POST 2"X45.5" W/4" BASE/COVER BKSND	844530018124

STEEL POST WITH BASE & BASE COVER 2" x 55"

ITEM#	DESCRIPTION	UPC #
53302550	FE26-POST 2"X55" W/4" BASE/COVER GBLK	844530027119
53302556	FE26-POST 2"X55" W/4" BASE/COVER ABZ	844530027133
53302558	FE26-POST 2"X55" W/4" BASE/COVER BKSND	844530027126



STEEL POST WITH BASE & BASE COVER 3" x 39.5"

ITEM#	DESCRIPTION	UPC #
53303410	FE26-POST 3"X39.5" W/5.25" BASE/COVER GBLK	844530015321
53303416	FE26-POST 3"X39.5" W/5.25" BASE/COVER ABZ	844530015338
53303418	FE26-POST 3"X39.5" W/5.25" BASE/COVER BKSND	844530018186

STEEL POST WITH BASE & BASE COVER 3" x 45.5"

ITEM#	DESCRIPTION	UPC #
53303470	FE26-POST 3"X45.5" W/5.25" BASE/COVER GBLK	844530015352
53303476	FE26-POST 3"X45.5" W/5.25" BASE/COVER ABZ	844530015369
53303478	FE26-POST 3"X45.5" W/5.25" BASE/COVER BKSND	844530018131

STEEL POST WITH BASE & BASE COVER 3" x 55"

ITEM#	DESCRIPTION	UPC #
53303550	FE26-POST 3"X55" W/5.25" BASE/COVER GBLK	844530019756
53303558	FE26-POST 3"X55" W/5.25" BASE/COVER BKSND	844530027102



2 POST AND BRACKETS



STEEL POST FOR FASCIA MOUNT BRACKET 2" x 49"

ITEM#	DESCRIPTION	UPC #
53349150	FE26-POST 2"X49" GBLK (13GA)	844530013211
53349156	FE26-POST 2"X49" ABZ (13GA)	844530013709
53349158	FE26-POST 2"X49" BKSND (13GA)	844530013716

STEEL POST FOR FASCIA MOUNT BRACKET 2"x 55"

ITEM#	DESCRIPTION	UPC #
53355150	FE26-POST 2"X55" GBLK (13GA)	844530013723
53355156	FE26-POST 2"X55" ABZ (13GA)	844530013730
53355158	FE26-POST 2"X55" BKSND (13GA)	844530013747

STEEL POST FOR FASCIA MOUNT BRACKET 3"x 49"

ITEM#	DESCRIPTION	UPC #
53349160	FE26-POST 3"X49" GBLK	844530015383
53349166	FE26-POST 3"X49" ABZ	844530015390
53349168	FE26-POST 3"X49" BKSND	844530015406

STEEL POST FOR FASCIA MOUNT BRACKET 3" x 55"

ITEM#	DESCRIPTION	UPC #
53355160	FE26-POST 3"X55" GBLK	844530015413
53355166	FE26-POST 3"X55" ABZ	844530015420
53355168	FE26-POST 3"X55" BKSND	844530015437



STEEL LINE POST WITH PRE-ATTACHED UB-04 1" (25mm) BRACKETS 2" X 39.5"

ITEM#	DESCRIPTION	UPC #
53312390	FE26-LINE POST 2"X39.5" w/UB-04 GBLK	844530018667
53312396	FE26-LINE POST 2"X39.5" w/UB-04 ABZ	844530018643
53312398	FE26-LINE POST 2"X39.5" w/UB-04 BKSND	844530018650

STEEL END POST WITH PRE-ATTACHED UB-04 1" (25mm) BRACKETS 2" X 39.5"

ITEM#	DESCRIPTION	UPC #
53322390	FE26-END POST 2"X39.5" w/UB-04 GBLK	844530018636
53322396	FE26-END POST 2"X39.5" w/UB-04 ABZ	844530018612
53322398	FE26-END POST 2"X39.5" w/UB-04 BKSND	844530018629

STEEL CORNER POST WITH PRE-ATTACHED UB-04 1" (25mm) BRACKETS 2" X 39.5"

ITEM#	DESCRIPTION	UPC #
53332390	FE26-CORNER POST 2"X39.5" w/UB-04 GBLK	844530018582
53332396	FE26-CORNER POST 2"X39.5" w/UB-04 ABZ	844530018599
53332398	FE26-CORNER POST 2"X39.5" w/UB-04 BKSND	844530018605

Post base cover is included with post

2 POST AND BRACKETS



Post base cover is included with post

STEEL LINE POST WITH PRE-ATTACHED UB-04 1" (25mm) BRACKETS 2" x 45.5"

ITEM#	DESCRIPTION	UPC #
53312450	FE26-LINE POST 2"X45.5" w/UB-04 GBLK	844530021735
53312456	FE26-LINE POST 2"X45.5" w/UB-04 ABZ	844530021742
53312458	FE26-LINE POST 2"X45.5" w/UB-04 BKSND	844530021759

STEEL END POST WITH PRE-ATTACHED UB-04 1" (25mm) BRACKETS 2" x 45.5"

ITEM#	DESCRIPTION	UPC #
53322450	FE26-END POST 2"X45.5" w/UB-04 GBLK	844530021766
53322456	FE26-END POST 2"X45.5" w/UB-04 ABZ	844530021773
53322458	FE26-END POST 2"X45.5" w/UB-04 BKSND	844530021780

STEEL CORNER POST WITH PRE-ATTACHED UB-04 1" (25mm) BRACKETS 2" x 45.5"

ITEM#	DESCRIPTION	UPC #
53332450	FE26-CORNER POST 2"X45.5" w/UB-04 GBLK	844530021797
53332456	FE26-CORNER POST 2"X45.5" w/UB-04 ABZ	844530021803
53332458	FE26-CORNER POST 2"X45.5" w/UB-04 BKSND	844530021810



Post base cover is included with post

STEEL LINE POST WITH PRE-ATTACHED UB-04 1" (25mm) BRACKETS 3" x 39.5"

ITEM#	DESCRIPTION	UPC #
53313390	FE26-LINE POST 3"X39.5" w/UB-04 GBLK	844530021643
53313396	FE26-LINE POST 3"X39.5" w/UB-04 ABZ	844530021650
53313398	FE26-LINE POST 3"X39.5" w/UB-04 BKSND	844530021667

STEEL END POST WITH PRE-ATTACHED UB-04 1" (25mm) BRACKETS 3" x 39.5"

ITEM#	DESCRIPTION	UPC #
53323390	FE26-END POST 3"X39.5" w/UB-04 GBLK	844530021674
53323396	FE26-END POST 3"X39.5" w/UB-04 ABZ	844530021681
53323398	FE26-END POST 3"X39.5" w/UB-04 BKSND	844530021698

STEEL CORNER POST WITH PRE-ATTACHED UB-04 1" (25mm) BRACKETS 3" x 39.5"

ITEM#	DESCRIPTION	UPC #
53333390	FE26-CORNER POST 3"X39.5" w/UB-04 GBLK	844530021704
53333396	FE26-CORNER POST 3"X39.5" w/UB-04 ABZ	844530021711
53333398	FE26-CORNER POST 3"X39.5" w/UB-04 BKSND	844530021728



2 POST AND BRACKETS



45.5" (1156mm)

Line Post 3" (76mm) End Post 3" (76mm) Corner Post 3" (76mm)

Post base cover is included with post

STEEL LINE POST WITH PRE-ATTACHED UB-04 1" (25mm) BRACKETS 3" x 45.5"

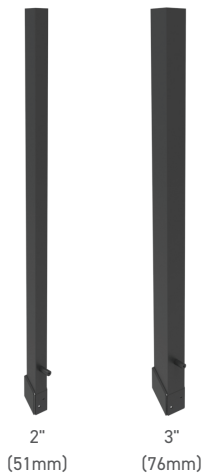
ITEM#	DESCRIPTION	UPC #
53313450	FE26-LINE POST 3"X45.5" w/UB-04 GBLK	844530021827
53313456	FE26-LINE POST 3"X45.5" w/UB-04 ABZ	844530021834
53313458	FE26-LINE POST 3"X45.5" w/UB-04 BKSND	844530021841

STEEL END POST WITH PRE-ATTACHED UB-04 1" (25mm) BRACKETS 3" x 45.5"

ITEM#	DESCRIPTION	UPC #
53323450	FE26-END POST 3"X45.5" w/UB-04 GBLK	844530021865
53323456	FE26-END POST 3"X45.5" w/UB-04 ABZ	844530025238
53323458	FE26-END POST 3"X45.5" w/UB-04 BKSND	844530021872

STEEL CORNER POST WITH PRE-ATTACHED UB-04 1" (25mm) BRACKETS 3" x 45.5"

ITEM#	DESCRIPTION	UPC #
53333450	FE26-CORNER POST 3"X45.5" w/UB-04 GBLK	844530021889
53333456	FE26-CORNER POST 3"X45.5" w/UB-04 ABZ	844530021896
53333458	FE26-CORNER POST 3"X45.5" w/UB-04 BKSND	844530021902



49" (1245mm)

2" (51mm) 3" (76mm)

STAIR STRINGER POST 2" (51mm)

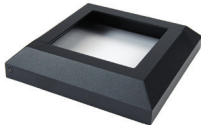
ITEM#	DESCRIPTION	UPC #
53312468	FE26 ADJ STAIR STRINGER POST 2" BKSND	844530000174

STAIR STRINGER POST 3" (76mm)

ITEM#	DESCRIPTION	UPC #
53313468	FE26 ADJ STAIR STRINGER POST 3" BKSND	844530000273

Stair Stringer Posts can be used with any of FBP's level or adjustable steel railing panels when used in conjunction with c-channel stair stringers. No welding required.

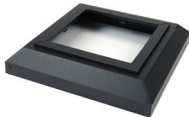
2 POST AND BRACKETS



Base Cover height is 1-1/2" (38mm)
Fits a 2" (51mm) post

POST BASE COVER 4" (102mm)

ITEM#	DESCRIPTION	UPC #
650027	FE26-POST BASE COVER 4" GBLK (2PCS)	844530002970
53504106	FE26-POST BASE COVER 4" ABZ (2PCS)	844530005537
53504108	FE26-POST BASE COVER 4" BKSND (2PCS)	844530012450



Base Cover height is 1-1/2" (38mm)
Fits a 3" (76mm) post

POST BASE COVER 5.25" (133mm)

ITEM#	DESCRIPTION	UPC #
650024	FE26-POST BASE COVER 5.25" GBLK (2PCS)	844530012184
53505256	FE26-POST BASE COVER 5.25" ABZ (2PCS)	844530012191
53505108	FE26-POST BASE COVER 5.25" BKSND (2PCS)	844530012849



Installation template included in package
Bags include 13 metal screws and 9 wood screws

SIMPLIFIED STAIR BRACKET 04 1" (25mm)

ITEM#	DESCRIPTION	UPC #
53504060	SIMPLIFIED STAIR BRACKET SSB-04-1" GBLK (BAG 4)	844530025009
53504066	SIMPLIFIED STAIR BRACKET SSB-04-1" ABZ (BAG 4)	844530025016
53504068	SIMPLIFIED STAIR BRACKET SSB-04-1" BKSND (BAG 4)	844530025023



Only 2 of the holes in bracket should be used in a diagonal fashion to attach to post
Bags include 13 metal screws and 9 wood screws

UNIVERSAL BRACKET 04 1" (25mm)

ITEM#	DESCRIPTION	UPC #
650036	FE26-UB-04-1" GBLK (BAG 4)	844530009603
53504006	FE26-UB-04-1" ABZ (BAG 4)	844530001423
53504008	FE26-UB-04-1" BKSND (BAG 4)	844530012405



Stair



Angle / Miter

Universal Bracket and Angle Adapter must be used together. Bags include 9 metal screws for attaching to Universal Bracket

UNIVERSAL BRACKET ANGLE ADAPTER 04 1" (25mm) | 1.25" (32mm)

ITEM#	DESCRIPTION	UPC #
650039	FE26-UB-04-1" ANG ADAPTER GBLK (BAG 4)	844530009634
53504016	FE26-UB-04-1" ANG ADAPTER ABZ (BAG 4)	844530009641
53504018	FE26-UB-04-1" ANG ADAPTER BKSND (BAG 4)	844530012412
650043	FE26-UB-05-1.25" ANG ADAPTER GBLK (BAG 4)	844530009726
53505016	FE26-UB-05-1.25" ANG ADAPTER ABZ (BAG 4)	844530009733
53505018	FE26-UB-05-1.25" ANG ADAPTER BKSND (BAG 4)	844530012474



2 POST AND BRACKETS



Bags include 13 metal screws and 9 wood screws

COLLAR BRACKET 04 1" (25mm) | 05 1.25" (32mm)

ITEM#*	DESCRIPTION	UPC #*
53504026A	FE26-CB-04-1" ABZ (BAG 4)	844530026853
53504028A	FE26-CB-04-1" BKSND (BAG 4)	844530026860
650037A	FE26-CB-04-1" GBLK (BAG 4)	844530026877
650034A	FE26-CB-05-1.25" GBLK (BAG 4)	844530026938
53505026A	FE26-CB-05-1.25" ABZ (BAG 4)	844530026914
53505028A	FE26-CB-05-1.25" BKSND (BAG 4)	844530026921



Adjusts up to a 45-degree angle
Bags include 13 metal screws and 9 wood screws

COLLAR BRACKET ADJUSTABLE 04 1" (25mm) | 05 1.25" (32mm)

53504036A	FE26-CB-04-ADJ-1" ABZ (BAG 4)	844530026884
53504038A	FE26-CB-04-ADJ-1" BKSND (BAG 4)	844530026891
650038A	FE26-CB-04-ADJ-1" GBLK (BAG 4)	844530026907
650035	FE26-CB-05-1.25" ADJ GBLK (BAG 4)	844530001911
53505036	FE26-CB-05-1.25" ADJ ABZ (BAG 4)	844530005742
53505038	FE26-CB-05-1.25" ADJ BKSND (BAG 4)	844530012498



Adjusts up to a 45-degree angle
Bags include 13 metal screws and 9 wood screws

COLLAR BRACKET SIDE ADJUSTABLE 04 1" (25mm) | 05 1.25" (32mm)

53504046A*	FE26-CBS-04-ADJ-1" ABZ (BAG 4)	844530026976
53504048A*	FE26-CBS-04-ADJ-1" BKSND (BAG 4)	844530026983
650048A*	FE26-CBS-04-ADJ-1" GBLK (BAG 4)	844530026990
650049	FE26-CBS-05-1.25" ADJ GBLK (BAG 4)	844530001980
53505046	FE26-CBS-05-1.25" ADJ ABZ (BAG 4)	844530005759
53505048	FE26-CBS-05-1.25" ADJ BKSND (BAG 4)	844530012504

* Collar brackets are being converted to new "A" versions as supplies of previous versions run out. Please note the new Item and UPC numbers.



COLLAR BRACKET INSTALLATION TEMPLATE

ITEM#	DESCRIPTION	UPC #
53546230	FE26-CB INSTALLATION TEMPLATE	844530017172



PATIO BRACKET 1" (25mm)*

ITEM#	DESCRIPTION	UPC #
53501010	FE26-PB-04 1" GBLK (BAG 4)	844530011798
53501016	FE26-PB-04 1" ABZ (BAG 4)	844530011842
53501018	FE26-PB-04 1" BKSND (BAG 4)	844530013235

*For residential on-grade use only. 30" deck height or less.



ANGLED PATIO BRACKET 1" (25mm)*

ITEM#	DESCRIPTION	UPC #
53501020	FE26-PB-04 (ANG) 1" GBLK (BAG 4)	844530011804
53501026	FE26-PB-04 (ANG) 1" ABZ (BAG 4)	844530011866
53501028	FE26-PB-04 (ANG) 1" BKSND (BAG 4)	844530013242

*For residential on-grade use only. 30" deck height or less.

2 POST AND BRACKETS



Bottom of bracket is "lipped" to secure post

FASCIA MOUNT BRACKET 2" (51mm) | 3" (76mm) with HEX HEAD BOLT COVERS - STRAIGHT

ITEM#	DESCRIPTION	UPC #
53502000	FM BRKT STRAIGHT 2" GBLK	844530013259
53502006	FM BRKT STRAIGHT 2" ABZ	844530013266
53502008	FM BRKT STRAIGHT 2" BKSND	844530013273
53503000	FM BRKT STRAIGHT 3" GBLK	844530015147
53503006	FM BRKT STRAIGHT 3" ABZ	844530015154
53503008	FM BRKT STRAIGHT 3" BKSND	844530015161



Bottom of bracket is "lipped" to secure post

FASCIA MOUNT BRACKET 2" (51mm) | 3" (76mm) with HEX HEAD BOLT COVERS - OUTSIDE CORNER

ITEM#	DESCRIPTION	UPC #
53502010	FM BRKT OUTSIDE CNR 2" GBLK	844530013280
53502016	FM BRKT OUTSIDE CNR 2" ABZ	844530013297
53502018	FM BRKT OUTSIDE CNR 2" BKSND	844530013303
53503010	FM BRKT OUTSIDE CNR 3" GBLK	844530015178
53503016	FM BRKT OUTSIDE CNR 3" ABZ	844530015185
50503018	FM BRKT OUTSIDE CNR 3" BKSND	844530027997



Bottom of bracket is "lipped" to secure post

FASCIA MOUNT BRACKET 2" (51mm) | 3" (76mm) with HEX HEAD BOLT COVERS - INSIDE CORNER

ITEM#	DESCRIPTION	UPC #
53502020	FM BRKT INSIDE CNR 2" GBLK	844530013310
53502026	FM BRKT INSIDE CNR 2" ABZ	844530013327
53502028	FM BRKT INSIDE CNR 2" BKSND	844530013334
53503020	FM BRKT INSIDE CNR 3" GBLK	844530015208
53503026	FM BRKT INSIDE CNR 3" ABZ	844530015215
53503028	FM BRKT INSIDE CNR 3" BKSND	844530015222



HEX HEAD BOLT COVER REPLACEMENTS

ITEM#	DESCRIPTION	UPC #
53503110	HEX HEAD BOLT COVER GBLK (BAG 4)	844530015444
53503116	HEX HEAD BOLT COVER ABZ (BAG 4)	844530015451
53503118	HEX HEAD BOLT COVER BKSND (BAG 4)	844530015468



POST ANCHOR BASE PLATE 4" (102mm) | 5.25" (133mm)

ITEM#	DESCRIPTION	UPC #
53504050	FE26-POST ANCHOR BASE PLATE 4"	844530013617
53505050	FE26-POST ANCHOR BASE PLATE 5.25"	844530013624



PERSONALIZATION



Actual 93.5"
(2375mm) x 5" (127mm)

Not for use on stair applications
Adds 5" (127mm) to the overall rail height

RING TOP STEEL ACCENT TOP PANEL 8'

ITEM#	DESCRIPTION	UPC #
640060	FE26-ATP RING TOP-8' GBLK	84453000624
53400946	FE26-ATP RING TOP-8' ABZ	844530001089
53400948	FE26-ATP RING TOP-8' BKSND	844530012368



Actual 93.5"
(2375mm) x 5" (127mm)

Adds 5" (127mm) to the overall rail height

CIRCLE TOP STEEL ACCENT TOP PANEL 8'

ITEM#	DESCRIPTION	UPC #
640063	FE26-ATP CIRCLE TOP-8' GBLK	84453000921
53401946	FE26-ATP CIRCLE TOP-8' ABZ	844530005704
53401948	FE26-ATP CIRCLE TOP-8' BKSND	844530012375



Actual 93.5"
(2375mm) x 5" (127mm)

Not for use on stair applications
Adds 5" (127mm) to the overall rail height

3 RAIL STEEL ACCENT TOP PANEL 8'

ITEM#	DESCRIPTION	UPC #
640067	FE26-ATP 3 RAIL-8' GBLK	844530001140
53402946	FE26-ATP 3 RAIL-8' ABZ	844530001164
53402948	FE26-ATP 3 RAIL-8' BKSND	844530012382



8' Actual 93.5" (2375mm)
10' Actual 117.5" (2985mm)

Adds 1/4"-1/2" (6mm - 13mm) to overall rail height

COLONIAL ROUND ACCENT TOP RAIL 8' | 10'

ITEM#	DESCRIPTION	UPC #
53405080	FE26-ATR COLONIAL ROUND-8' GBLK	844530011934
53405086	FE26-ATR COLONIAL ROUND-8' ABZ	844530011941
53405088	FE26-ATR COLONIAL ROUND-8' BKSND	844530013228
53405100	FE26-ATR COLONIAL ROUND-10' GBLK	844530014386
53405106	FE26-ATR COLONIAL ROUND-10' ABZ	844530030102
53405108	FE26-ATR COLONIAL ROUND-10' BKSND	844530024712



Wood screws included
28" (711mm) spacing recommended

STEEL CAP RAIL CLIP 1" (25mm)

ITEM#	DESCRIPTION	UPC #
640185	FE26-CAP RAIL CLIP GBLK (BAG 4)	844530009788
53504056	FE26-CAP RAIL CLIP ABZ (BAG 4)	844530009795
53504058	FE26-CAP RAIL CLIP BKSND (BAG 4)	844530013662

M PERSONALIZATION



PRESSED DOME CAP 2" (51mm)

ITEM#	DESCRIPTION	UPC #
53502100	FE26-PRESSED DOME CAP 2" GBLK	844530013822
53502106	FE26-PRESSED DOME CAP 2" ABZ	84453001393
53502108	FE26-PRESSED DOME CAP 2" BKSND	844530012399



PRESSED DOME CAP 3" (76mm)

ITEM#	DESCRIPTION	UPC #
53503100	FE26-PRESSED DOME CAP 3" GBLK	844530013785
53503106	FE26-PRESSED DOME CAP 3" ABZ	844530011460
53503108	FE26-PRESSED DOME CAP 3" BKSND	844530012856



BALL CAP 2" (51mm)

ITEM#	DESCRIPTION	UPC #
53502050	FE26-BALL CAP 2" GBLK	844530013648



BALL CAP 3" (76mm)

ITEM#	DESCRIPTION	UPC #
53503050	FE26-BALL CAP 3" GBLK	844530013655



34" (864mm)
40" (1016mm)

34.5" (876mm)

Gate allows for a 36" (914mm) opening
1-1/2" (38mm) Upright Caps included
For use with Gate Kit #2

STEEL RAILING GATE 34"

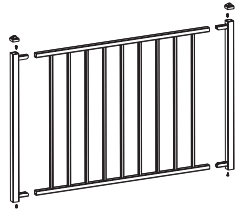
ITEM#	DESCRIPTION	UPC #
53134350	FE26-GATE 34"X34.5" GBLK	844530013143
53134356	FE26-GATE 34"X34.5" ABZ	844530013150
53134358	FE26-GATE 34"X34.5" BKSND	844530013167

STEEL RAILING GATE 40"

ITEM#	DESCRIPTION	UPC #
53140350	FE26-GATE 40"X34.5" GBLK	844530013174
53140356	FE26-GATE 40"X34.5" ABZ	844530013181
53140358	FE26-GATE 40"X34.5" BKSND	844530013198



PERSONALIZATION

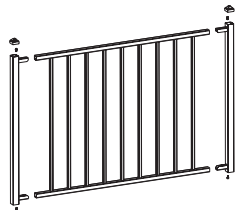


34" (864mm)

Maximum Overall width 48" (1219mm)

STEEL RAILING GATE UPRIGHTS - MAKE A GATE - 34"

ITEM#	DESCRIPTION	UPC #
53134050	FE26-GATE UPRIGHTS 34" GBLK (2PCS)	844530013112
53134056	FE26-GATE UPRIGHTS 34" ABZ (2PCS)	844530013129
53134058	FE26-GATE UPRIGHTS 34" BKSND (2PCS)	844530018193



40" (1016mm)

Maximum Overall width 48" (1219mm)

STEEL RAILING GATE UPRIGHTS - MAKE A GATE - 40" (1016mm)

ITEM#	DESCRIPTION	UPC #
53540050	FE26-GATE UPRIGHTS 40" GBLK (2PCS)	844530013341
53540056	FE26-GATE UPRIGHTS 40" ABZ (2PCS)	844530013358
53540058	FE26-GATE UPRIGHTS 40" BKSND (2PCS)	844530013365



Hinge (x2)



Lock & Latch

GATE KIT #2 (USES 1.5" [38mm] OF SPACE IN OPENING)

ITEM#	DESCRIPTION	UPC #
650084	GATE KIT #2 (LATCH, HINGES, FASTENERS)	844530016267

Latch is self-closing
Includes mounting hardware and key



Available in Gloss Black only

GATE DROP ROD 24" (610mm)

ITEM#	DESCRIPTION	UPC #
650197	GATE-DROP ROD - 24"	844530008163

STEEL RAILING





DISCOVER THE TOTAL SOLUTION

Explore our complete collection of revolutionary products that can work in harmony or stand alone to create beautiful, long-lasting spaces.

© 2022 Fortress Building Products. Unless otherwise noted, all proprietary names are trademarks of Fortress, Inc./LP. All rights reserved.